

STAINLESS STEEL ENVIROLINE® SERIES TROUGH JUNCTION ENCLOSURES WITH VIEWING WINDOW

Application

Designed to house electrical controls, instruments and components that require unrestricted viewing of the gauges or controls, in areas, which may be regularly hosed down or are in very wet or oily conditions. Provides a degree of protection from dust, dirt, oil, and water. For outdoor applications a drip shield is recommended. For installation information, consult our installation manual at www.saginawcontrol.com.

Construction

- 0.063" stainless steel Type 304.
- Seams continuously welded and ground smooth.
- Flange trough collar around all sides of door opening.
- Large viewing windows.
- Pour in place oil and water resistant gasket.
- Standoffs provided for mounting optional subpanels.
- Removable hinges.
- Doors open 180 degrees.
- Black mini quarter turn latches.
- Latches are opened or closed with a screwdriver.
- Sealing washers and hole plugs included.
- Ground stud on door and body.
- Mounting holes in back.
- Mounting feet included.
- Padlocking or keylocking latches, and tamper-resistant hardware are available.

IS6 Industry Standards

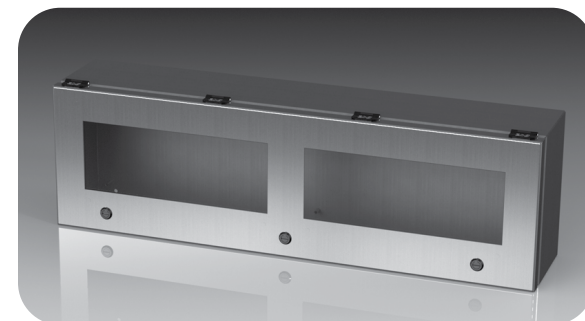
NEMA Type 3R, 4, 4X, 12 & Type 13
UL Listed Type 3R, 4, 4X & 12
CSA Type 3R, 4, 4X & 12
IEC 60529 IP66

***To maintain Type 3R listing, drainage is required. Install equally rated drainage device or drill a 1/8 to 1/4 inch hole in the bottom center of the enclosure, approximately 1 inch from the right, and 1 inch from the left for drainage, use listed rain-tight or wet location hubs. Drip shield over the door is recommended for all outdoor applications.

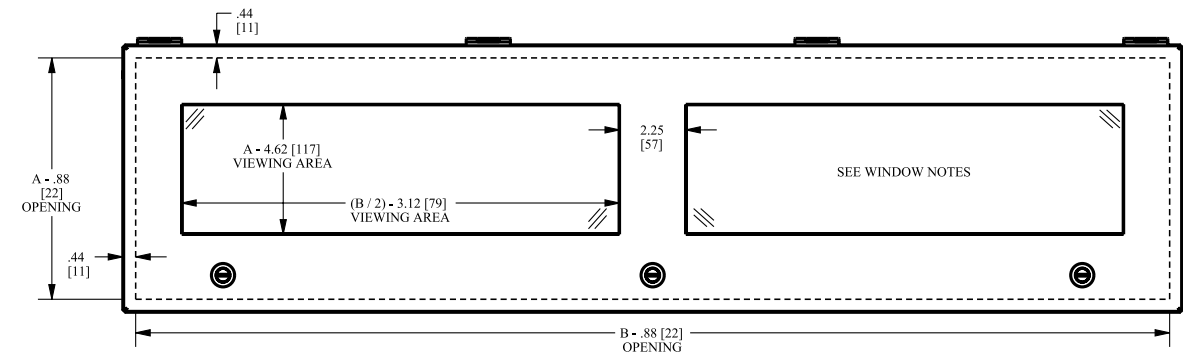
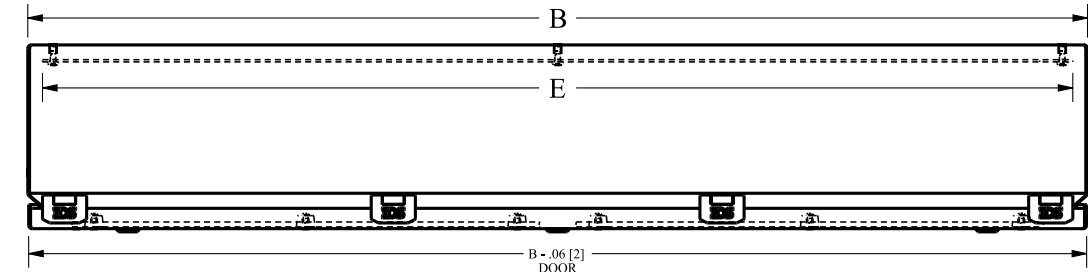
Enclosure Product Code S6

Subpanel (P3)

Catalog No.	Height (A)	Width (B)	Depth (C)	Industry Standard	Catalog No.	Panel Height (D)	Panel Width (E)
SCE-L9126ELJWSS	9.00	12.00	6.00	IS6	SCE-9P12L	8.00	11.00
SCE-L9128ELJWSS	9.00	12.00	8.00	IS6	SCE-9P12L	8.00	11.00
SCE-L9186ELJWSS	9.00	18.00	6.00	IS6	SCE-9P18L	8.00	17.00
SCE-L9188ELJWSS	9.00	18.00	8.00	IS6	SCE-9P18L	8.00	17.00
SCE-L9246ELJWSS	9.00	24.00	6.00	IS6	SCE-9P24L	8.00	23.00
SCE-L9248ELJWSS	9.00	24.00	8.00	IS6	SCE-9P24L	8.00	23.00
SCE-L9306ELJWSS	9.00	30.00	6.00	IS6	SCE-9P30L	8.00	29.00
SCE-L9308ELJWSS	9.00	30.00	8.00	IS6	SCE-9P30L	8.00	29.00
SCE-L9366ELJWSS	9.00	36.00	6.00	IS6	SCE-9P36L	8.00	35.00
SCE-L9368ELJWSS	9.00	36.00	8.00	IS6	SCE-9P36L	8.00	35.00



STAINLESS STEEL ENVIROLINE® SERIES TROUGH JUNCTION ENCLOSURES WITH VIEWING WINDOW TECHNICAL DATA



LATCH NOTES:

One latch centered on door horizontally if width is ≤ 14.00 [356]

Two latches located 3.00 [76] from sides of door if width is > 14.00 [356]

An Additional latch is centered horizontally if width is > 20.00 [508]

WINDOW NOTES:

Door has a single window when viewing area width is ≤ 16.00 [406]

Door has two windows if viewing area width would be > 16.00 for a single window.

